

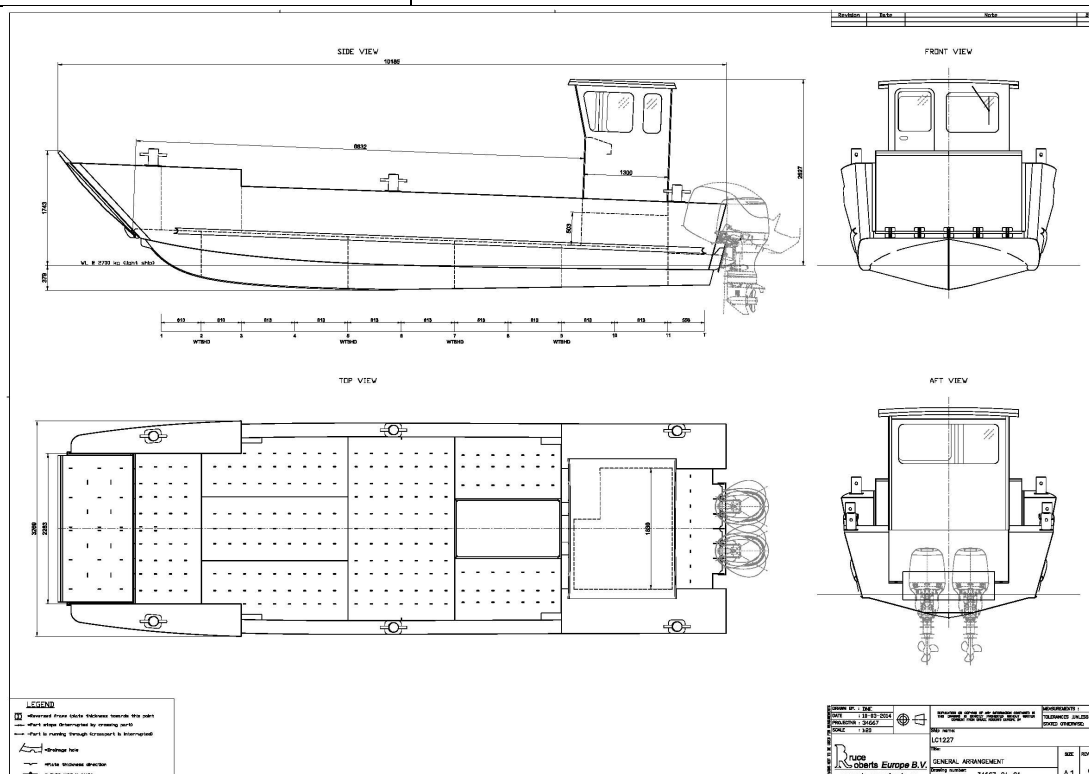
# Robust boats Landing craft LC1227

Details: Island Trader: Model LC1227 / hin GB-RABRC070F414

Price: Offers in region of **£95,000 GBP**, price ex vat

Lying Robust boats workshops, Solva, Pembrokeshire. SA62 6BR

LOA	10.2M
Beam	3.2m
Draught	0.45m
Vertical height	2.85m above waterline
Max hp	Twin 200hp Outboard
Fitted hp	Twin 150hp mariner 4 stroke
Bow ramp	12v hydraulic ram & cable system 1500kg
Wheelhouse	Raised 4 man
Hatches	Hercules oval x 2 to deck
Windows	Aluminium framed 6mm toughened glass
door	Aluminium framed 6mm toughened glass
Steering	Sea star hydraulic, S/S tie bar





# ROBUSTBOATS



Bespoke Design &  
Build Quality  
Aluminium Fishing  
& Work Boats

Stability book	Complete and extensive
Coding	MCA COP3 20miles 3 tonne cargo Or up to 12 passengers & 2 crew
Fixed Equipment	Twin binnacle control upgrade Low friction control cables 12v wiper and pantograph arm 12v air horn Echomax midi radar reflector 12v Nav lights, port St'bd, stern & anchor 12v work / deck lamps Twin 200l under deck fuel tanks Fuel senders & gauges High water bilge alarms Fuel vapour detector Fuel Tank vents & shut off valves External fuel filters / water separators Icom M323 dsc VHF radio Garmin 50s gps tracker sounder External GPS antenna 12v Bilge pumping system to all compartments LED interior cabin lighting Helm seat & bench seat / storage inside cabin Blue sea waterproof switches throughout Forward bow door trailing lead switch Removable bow door extension 3 x 110ah 12v marine battery system Aft scuppers x 2 Stainless Steel props
Safety equipment	3 x 2kg ABC fire extinguishers 16 x KRU manual inflation life jackets 14 x tpa's Cat 'C' first aid kit. Offshore flare pack. Life raft holder S/S 2 x life rings buoyant line and light 16kg main anchor, 10mm x 10m chain & warp 20l fresh water container Safety training manual Emergency procedures cards Emergency radio procedures card Binnacle mount compass. Hand bearing compass 2 x Rubber buckets with lanyards Telescopic boat hook 2 x 14mm x 10m Dock lines
Max Performance Twin 150hp	30 knots unladen, 24 knots with 2 tonnes, 20 knots with 3 tonnes

Coding and inspection was carried out by Mecal UK Ltd  
Full Stability booklet also created by Mecal UK Ltd



Crane Launch, weight 4000kgs



Sea trials on River Thames



Jaguar XE Promotion, London  
See the landing craft in action here.

<http://www.youtube.com/watch?v=qUFxdvleomw>



This landing craft was completed in august 2014 and has only been used on two or three occasions, As such we are classing this as a new demonstrator vessel having completed extensive sea trials.  
Engine monitors currently show Approx **150hrs use**.

List Price: £139,500 GBP

Current asking price is £95,000 GBP and includes all equipment on board. (Liferaft is hired and is excluded from sale)

**Sold as seen. Any trials welcome**

Delivery can be arranged at cost price to a UK port of your choice.  
Any sea trials welcome.



Delivering transit van to one of the Islands